



## Investing in people

*Did you know that Quadron does more than just maintain your gardens?*

**Quadron invests in the way Thames Valley Housing schemes look in a number of ways.** Quadron works in partnership with Thames Valley Housing Association by match funding into projects that add colour and interest, from bulking up sparse planting schemes to renovating unkempt areas.

## Garden makeover

**In April 2011, Quadron carried out new planting at Anstice Close, Chiswick in partnership with Thames Valley Housing Association.**

Worn out shrubs were replaced with a variety of plants that have made a

pleasant change to the landscape, adding colour and interest in the communal garden area all year around.

Quadron will also be providing plants for the upcoming Resident Planting Day.



*Quadron team preparing planting beds at Anstice Close*



*Plants adding new colours and interest*

## Investing in staff training

**As part of Quadron's commitment to provide a quality service to Thames Valley Housing Association and its residents we are currently investing in the training of our frontline employees.**

This initiative will not only improve the landscape value of the housing estate for the residents but also provide 'on-the-job training' for staff members who are working towards NVQ level 2 in Amenity Horticulture.

The project allows staff to familiarise themselves with a wider range of plants than would normally be found on Thames Valley Housing's estates, improving employees' skills identifying hardy shrubs, herbaceous plants and roses.

The introduction of these specimens will allow staff to learn techniques of pruning and maintaining. They will also learn about the planting processes, plant feeds, nutrient requirements and watering regimes as part of their NVQ on-the-job training.

*“Quadron believes that these techniques will help improve the overall standard of horticulture within Thames Valley Housing sites.”*

## 'Bulking out' projects

**New Plants and shrubs have been installed to bulk out areas of planting that have been historically bare, and at no extra cost.**

Residents provided positive feedback on-site when meeting our Resident Involvement Manager and our Senior

Supervisor during the installation. All planting was undertaken by our 'Train to Gain' staff.

A response from Mrs. Nora Denyer, the resident of Flat 16, Stoke Mews: "Thanks for the new plants! Pleasant change from what it was before."



**Do you know...**

**That we are continuing to develop our website? Check it out at [www.quadronenvironment.co.uk](http://www.quadronenvironment.co.uk)**

# Two new appointments to strengthen the management team for TVHA contract



Jeff Hawkins and Preeti Chatwal

**Quadron is very pleased to introduce two new members to enhance its management team in the TVHA contract.**

The roles of Resident Involvement Manager and Senior Contract Supervisor will enhance the existing team to develop links with the residents, encourage feedback and develop the service.

## Preeti Chatwal

### *Resident Involvement Manager*

Preeti joins us from the Royal Borough of Kingston and is an Architect with considerable experience in Resident Involvement, especially with Resident Associations on the Play Builder project and the Mayor of London's Safer Parks Award.

Her role involves improving resident satisfaction, enhancing customer perception, encouraging resident involvement, developing and improving new landscape schemes, building relationships with the resident groups and inspectors and bidding for external funding for future developments.

## Jeff Hawkins

### *Senior Contract Supervisor*

Jeff joins us from Quadron's Hammersmith & Fulham contract where he was the Area Manager in charge of housing, managing up to 30 members of staff across approximately 200 high performance specification sites.

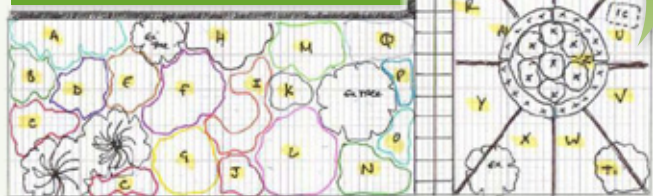
Jeff spent over three months seconded to the TVHA Partnership prior to accepting the role to assist with the mapping process and help improve service delivery on the ground. He will be responsible for the day to day operations and running of the contract.

## Horticulture schemes at Valley View and Hallmark Close

Landscape Improvements have been completed at Valley View and Hallmark Close by introducing new plants in place of the worn-out plants and shrubs.



One of the designs



## Horticulture development

Quadron's Horticultural Development Manager, Andrew Kauffman works hard to seek funding and investment from external sources for community projects and community involvement schemes, working closely with the TVHA team. He will be supported by our Resident Involvement Manager.

## Material provided for community planting

Quadron along with its partners Advance Tree Services provided bark mulch and soil improvers free of charge to the community planting project at Lismore Park.

## RHS re-use scheme

Working with the charity London Community Resources Network and with assistance from suppliers and subcontractors, Quadron organised the collection of left over plants and materials from the 2010 Chelsea and Hampton Court Flower Shows for the benefit of residents in Thames Valley Housing Association. Let Quadron know if your group need anything this year and we will see if we can help.

## Annual Garden Competition

Quadron sits on the judging panel of the TVHA annual garden competition, so if you are involved in a private or communal garden, have window boxes or an allotment TVHA and Quadron want to hear from you! **There are some great prizes on offer to winners.**